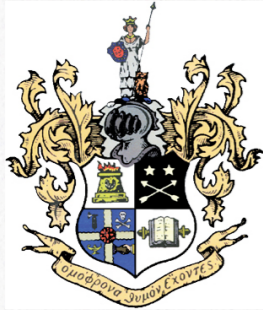
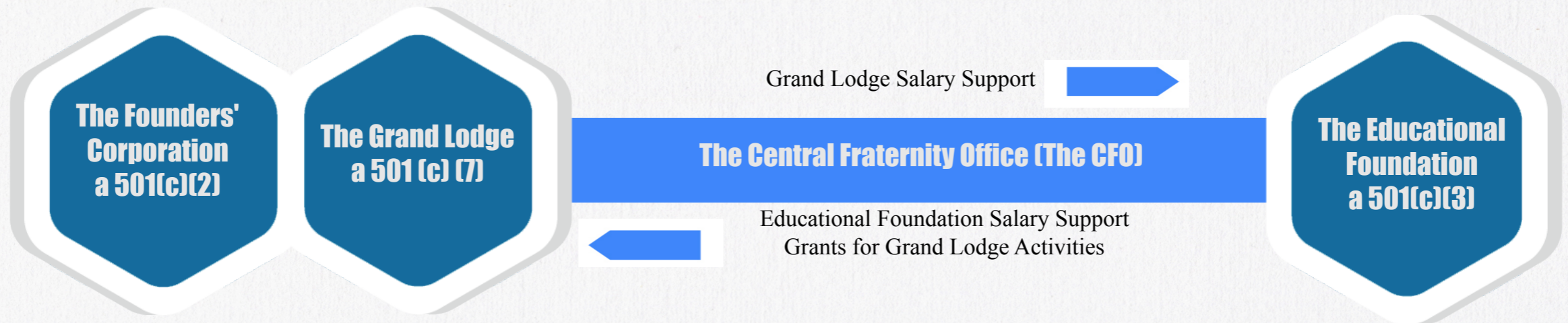


# ORGANIZATIONAL STRUCTURE

## INTERNATIONAL ORGANIZATION ENTITY CHART



Salary Support is provided to and from each entity along with renting space and equipment through a Lease and Services Agreement. The employees at the Central Fraternity office work for each entity on a specified percentage basis.



### The Founders' Corporation

- Holds the assets of the Grand Lodge
- Supports its operation through yearly transfers from the investments
- The alumni members of the Grand Lodge and four elected volunteer alumni constitute the board of directors of the Corporation
- Other functions include investments, bridge loans and lines of credit for individual alumni organizations

*Donations to the Founder's Corporation are not tax deductible.*

### The Grand Lodge

- Volunteer governing body of the Fraternity and consists of 5 alumni members and 2 undergraduate members
- Responsible for the undergraduate experience and relationships with our host institutions
- Govern and support expansion
- Run the annual convention
- Monitor Charge operations with support from the Executive Director and the Charge Consultants

*Donations to the Grand Lodge are not tax deductible*

### The Central Fraternity Office (CFO)

- Repository for the archives of the organization
- Conducts the business of the Grand Lodge and Educational Foundation
- Salaried employees of the Grand Lodge and Educational Foundation include the Executive Director, Director of Development, Systems Administrator, Director of Charge Operations, an Educational Consultant, and a Charge Consultants

### The Educational Foundation

- Holds the endowment of the fraternity; owns the Lewis Wharf property; and operates alumni programming and support through the Voluntary Graduate Dues Program
- Provides grants and scholarships along with funding to the Grand Lodge for Minerva events at Convention and the annual Preamble Institute
- Supported in its work through the Executive Director, the Director of Development and the Systems Administrator
- 17 member volunteer Board of Directors  
*Donations to the Educational Foundation are tax deductible*